

# DEMOGRAPHIC STUDY-APRIL 2009

## CHURCH OF THE APOSTLES

STUDY USING MISSIONINSITE WEBSITE

( [www.MissionInsite.com](http://www.MissionInsite.com) )

ACCESS PROVIDED BY DIOCESE OF ARIZONA

SOURCES:

US CENSUS BUREAU

AGS /EXPERION

DECISIONINSITE/MISSIONINSITE

# AREA OF DEMOGRAPHIC STUDY

- 12 MILE RADIUS FROM CHURCH, INCLUDING SADDLEBROOK
- FIVE CLOSEST ZIP CODES TO CHURCH
  - 85737 – ZIP THAT INCLUDES CHURCH
  - 85755 – NORTH OF CHURCH, INCLUDES RANCHO VISTOSO
  - 85704 – SOUTH OF CHURCH
  - 85742 – WEST OF CHURCH
  - 85718 – SW OF CHURCH
- SAMPLE OF RANCHO VISTOSO
- SAMPLE OF SADDLEBROOKE

# DEMOGRAPHICS - 12 MILE RADIUS FROM CHURCH

	12 MILE RADIUS
POPULATION	273,306
# HOUSEHOLDS	111,506
POP PER HOUSHOLD	2.5
# FAMILYS	69,763
WHITE	69.8%
HISPANIC	20.4%
ASIAN	2.9%
BLACK	2.2%
STUDY AREA AVG AGE	38.7
ARIZONA AVG AGE	34.7
AVG HOUSEHOLD INCOME	\$75,544

# DEMOGRAPHICS – SURROUNDING ZIP CODES

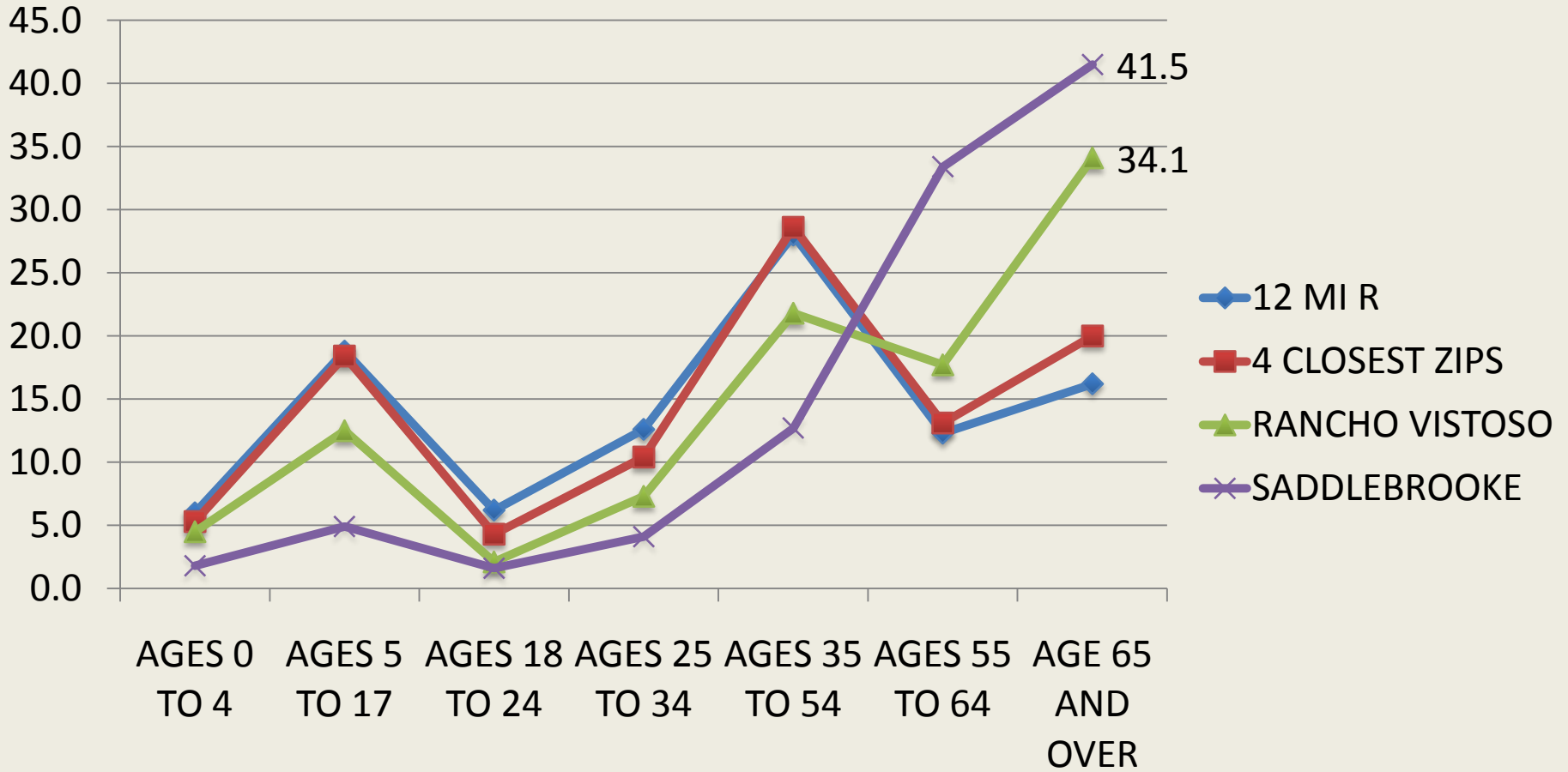
	85737	85755	85742	85704	85718
POPULATION	18,897	13,309	28,818	34,478	29,012
# HOUSEHOLDS	7,002	5,851	10,247	15,128	13,203
POP / HOUSHOLD	2.7	2.3	2.8	2.3	2.2
# FAMILYS	5,298	4,399	7,639	8,648	7,426
WHITE	78.5%	83.3%	73.4%	76.2%	77.4%
HISPANIC	12.4%	8.3%	17.6%	14.8%	11.3%
ASIAN	3.1%	2.2%	2.3%	2.8%	4.0%
BLACK	1.7%	1.6%	2.1%	1.8%	1.7%
AVG AGE	40.0	47.2	37.3	41.8	44.9
AVG HH INCOME	\$97,765	\$82,318	\$81,767	\$69,776	\$135,960

# DEMOGRAPHICS – RANCHO VISTOSO & SADDLEBROOKE

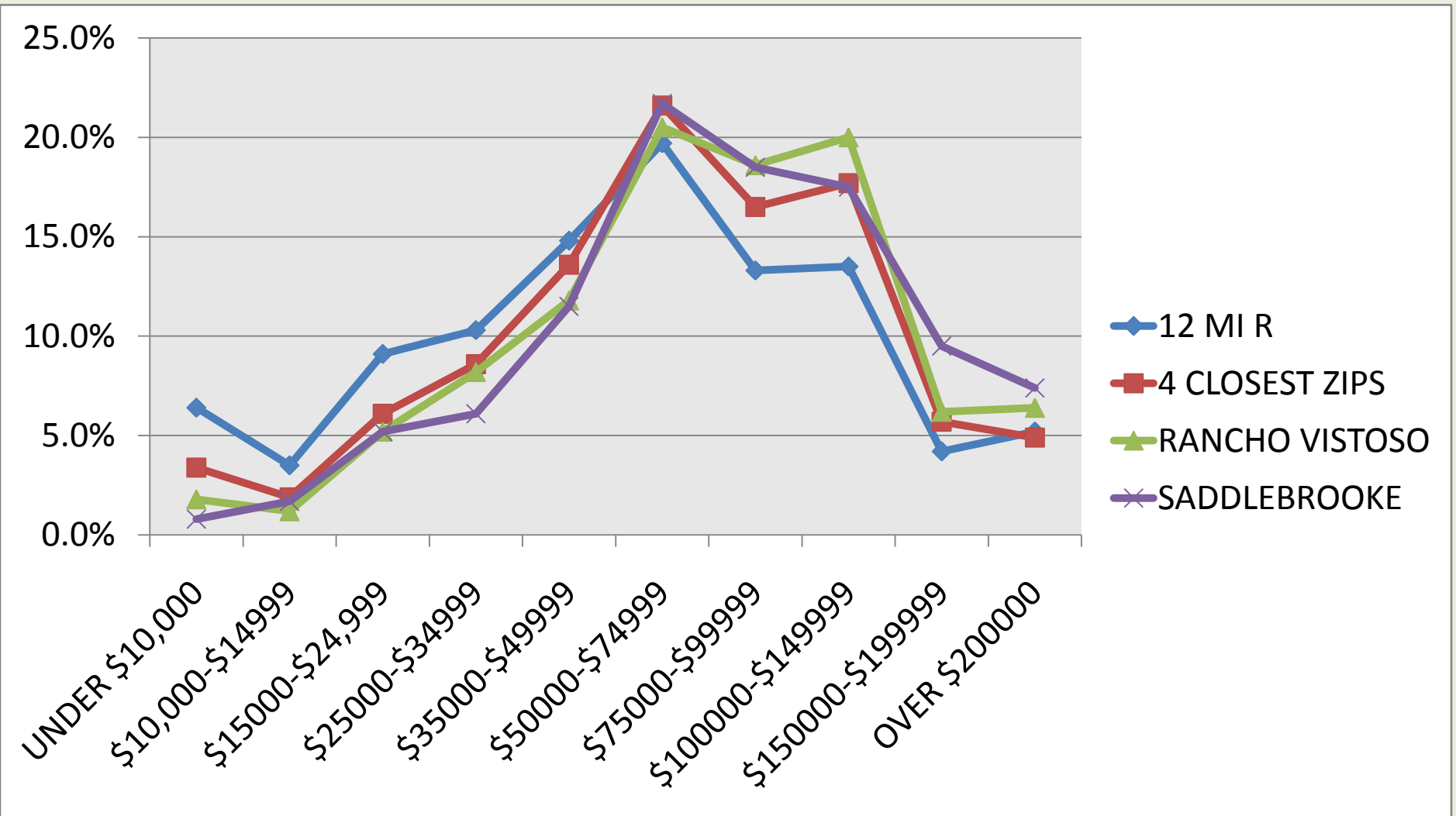
(REPRESENTATIVE SAMPLE OF BOTH)

	RANCHO VISTOSO	SADDLEBROOKE
POPULATION	5636	1486
# HOUSEHOLDS	2439	879
POP / HOUSHOLD	2.3	1.7
# FAMILYS	1850	723
WHITE	83%	93.4%
HISPANIC	8.6%	0.9%
ASIAN	2.4%	1.3%
BLACK	1.5%	1.1%
AVG AGE	49.3	61.0
AVG HH INCOME	\$86,778	\$96,631

# AGE DISTRIBUTION COMPARISON



# HOUSEHOLD INCOME DISTRIBUTION



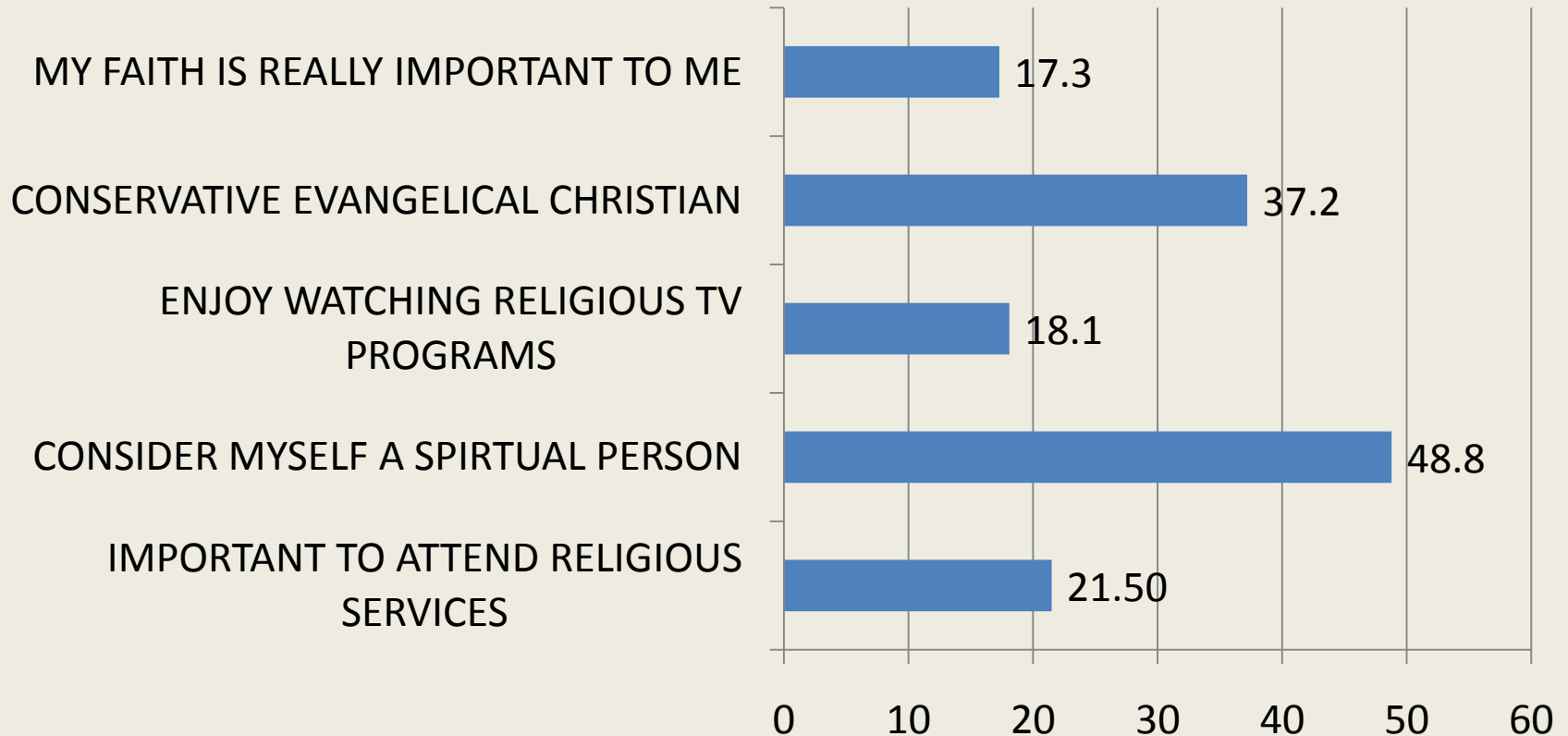
# SCHOOL AGED CHILDREN POPULATION & EXPECTED 2008 TO 2013 GROWTH

2008 POPULATION	12 MI R	85737	85755	85742	85704	85718
EARLY ELEMENTARY AGES 5 TO 9	16,829	1311	587	2180	1626	1299
LATE ELEMENTARY-MID SCHOOL AGES 10 TO 14	17,211	1587	560	2235	1787	1611
HIGH SCHOOL AGES 15 TO 19	17,269	1229	464	1996	1988	1674

2008 -2013 GROWTH	12 MI R	85737	85755	85742	85704	85718
EARLY ELEMENTARY AGES 5 TO 9	+3.0%	+1.7%	+0.3%	+1.0%	+3.0%	+2.7%
LATE ELEMENTARY-MID SCHOOL AGES 10 TO 14	+2.7%	+1.2%	+1.0%	+1.5%	+2.8%	+1.9%
HIGH SCHOOL AGES 15 TO 19	-5.7%	-2.8%	-1.3%	-2.6%	-5.8%	-4.6%

# ADULT RELIGIOUS PRACTICES

**% OF POPULATION**



ALL STUDY AREAS ARE ABOUT THE SAME AND ARE ABOUT THE SAME AS STATE AVERAGES.  
OLDER GROUPS TEND TO BE MORE RELIGIOUS AND MORE EVANGELICAL.

# OBSERVATIONS

- LARGE SENIOR POPULATION
  - SUN CITY & SADDLEBROOKE
- YOUNG SCHOOL AGE CHILDREN POPULATION EXPECTED TO GROW
- ABOVE AVERAGE INCOME, 12 MI R = \$75,544
  - PIMA COUNTY = \$63,106
  - STATE OF ARIZONA = \$69,230
- ABOUT HALF OF POPULATION CONSIDER THEMSELVES TO BE A SPIRITUAL PERSON
  - A LITTLE OVER 20% THINK REGULAR CHURCH ATTENDANCE IS IMPORTANT
  - LESS THAN 20% THINK THEIR FAITH IS REALLY IMPORTANT TO THEM
  - LARGE CONSERVATIVE EVANGELICAL GROUP